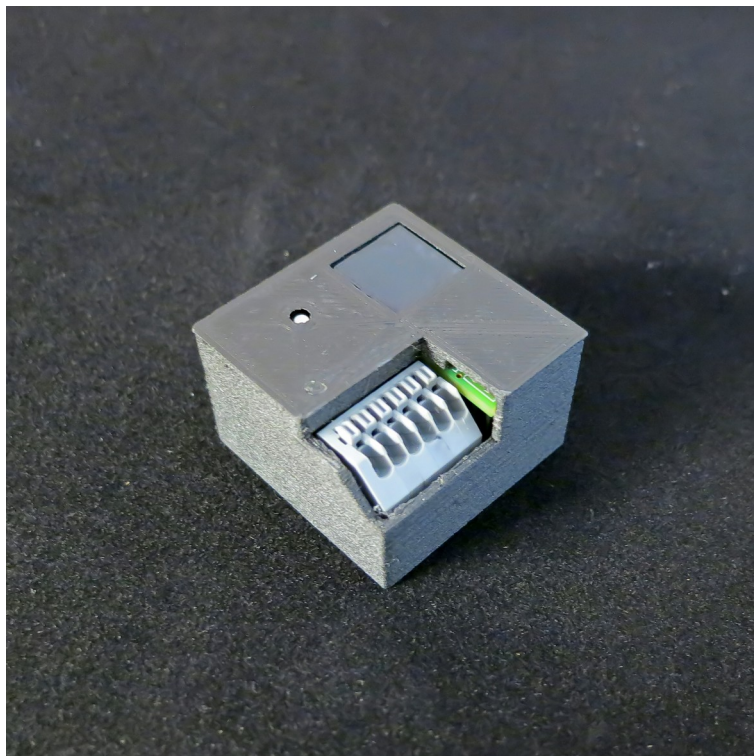
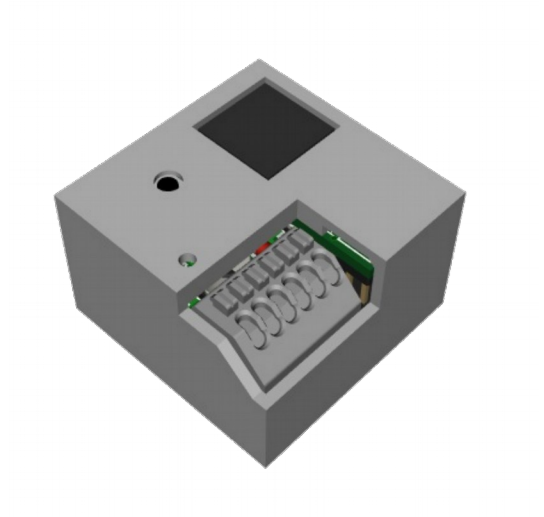
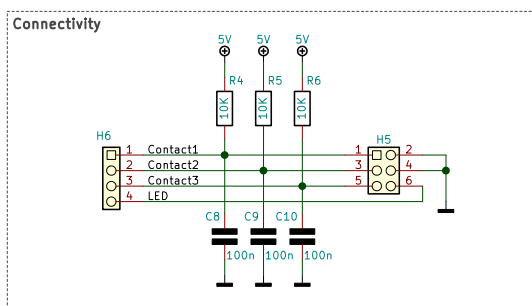
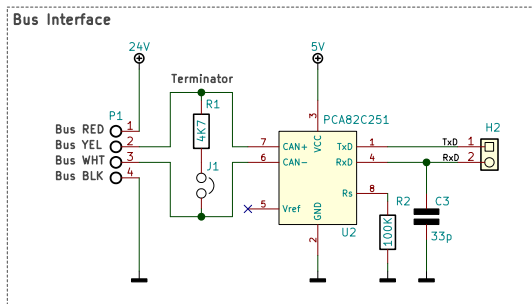
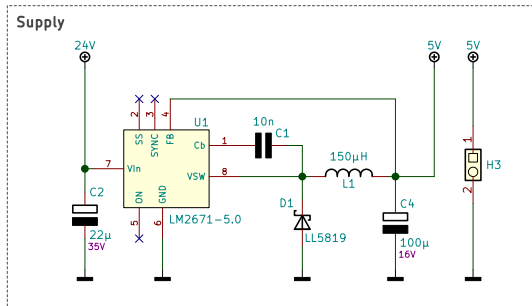


### Cy4NET N° 00042: Contactor

Cy4NET-Gerät zur Verarbeitung von Kontaktzuständen. Als Anschlussmöglichkeit bietet das Board drei Kontakteingänge und einen bis zu 30 mA belastbaren Ausgang, z.B. zur Ansteuerung einer LED.







# Cy4NET N° 00042: Contactor (bottom shelf)

File: B00042\_B.sch

© Reimar Grasbon

Size: A4 Date: 2019-04-14

KiCad E.D.A. eeschema (5.1.4)-1

Rev: A

1/1



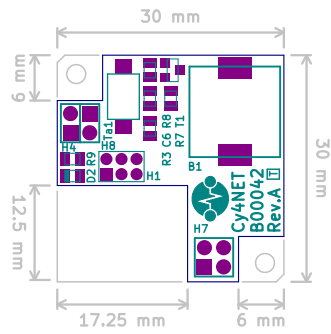
### BOM B00042 *top shelf*

Reference	Value	Footprint / Type
B1	Buzzer	SMD Ekulit_P12A03
C13, C12	22p	SMD 0805
C5, C6, C11, C7	100n	SMD 0805
D2	LED	SMD 0805
H1	Pin 3x2	THD Pin-03x2 (2mm)
H4	Pin 1x2	THD Pin-02x1
H7	Pin 4	THD Pin-02x2
H8	Pin 2	THD Pin-02x1
IC1	ATmega328-TQFP	SMD TQFP-32
R3, R8	100K	SMD Gen-0805
R7	4K7	SMD Gen-0805
R9	820	SMD Gen-0805
T1	BSS123	SMD SOT-23
Ta1	Pushbutton	SMD Pushbutton-6x4mm
X1	11.0592Mhz	SMD Crystal QC5A 32x50mm 4 Pad

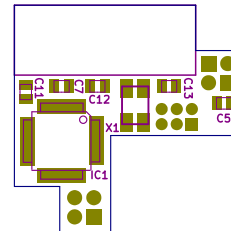
### BOM B00042 *bottom shelf*

Reference	Value	Footprint / Type
C1	10n	SMD 0805
C2	22μ	SMD ElCap-53x53mm, 35V
C3	33p	SMD 0805
C4	100μ	SMD ElCap-66x66mm, 16V
C9, C8, C10	100n	SMD 0805
D1	LL5819	SMD Diode-50X25MM
H2	Pin 2	THD Pin-02x1
H3	Pin 1x2	THD Pin-02x1
H5	Pin 3x2	TermBlock-Wago-06-250
H6	Pin 4	THD Pin-02x2
J1	Jumper 2	SMD Jumper
L1	150μH	SMD Inductor-73x73mm
P1	WAGO 243-724	TermBlock-Wago-Micro-4
R1	4K7	SMD 0805
R2	100K	SMD 0805
R5, R4, R6	10K	SMD 0805
U1	LM2671-5.0	SMD SO8E
U2	PCA82C251	SMD SO8E

## Top shelf

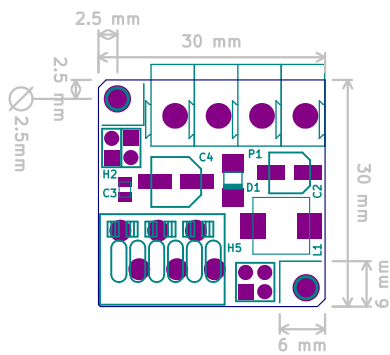


top side

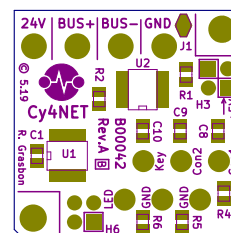


bottom side

## Bottom shelf



top side



bottom side

**Cy4NET N° 00042: Contactor**



File: B00042\_T.kicad\_pcb

© Reimar Grasbon

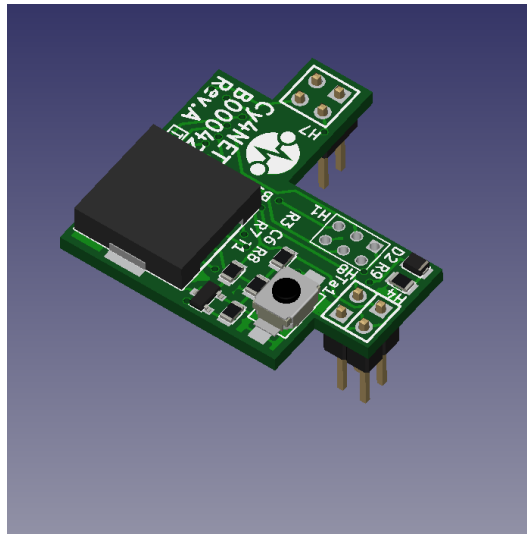
Size: A4	Date: 2019-04-14
----------	------------------

KiCad E.D.A. pcbnew (5.1.4)-1

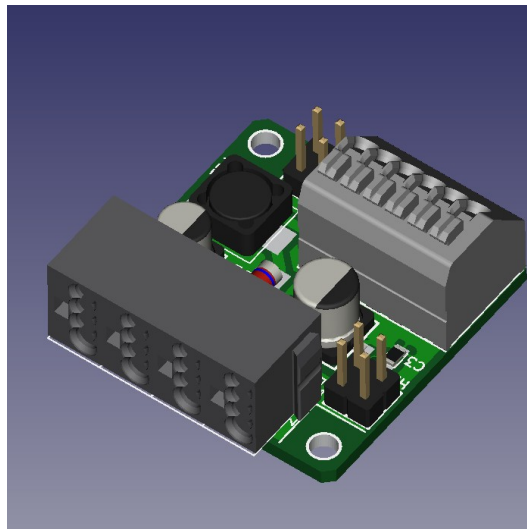
Rev. A

1/1

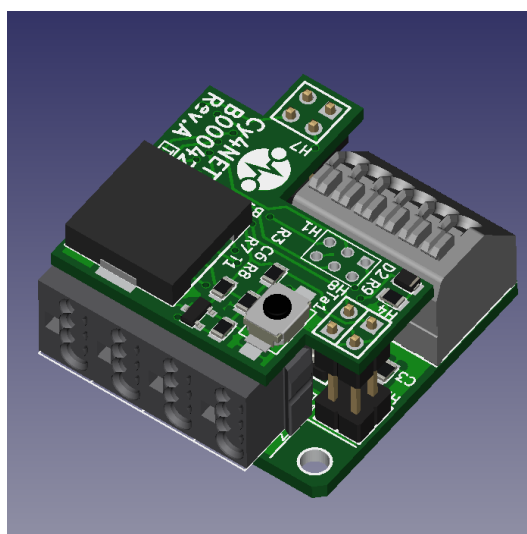
## PCB 3D-View



Top shelf PCB

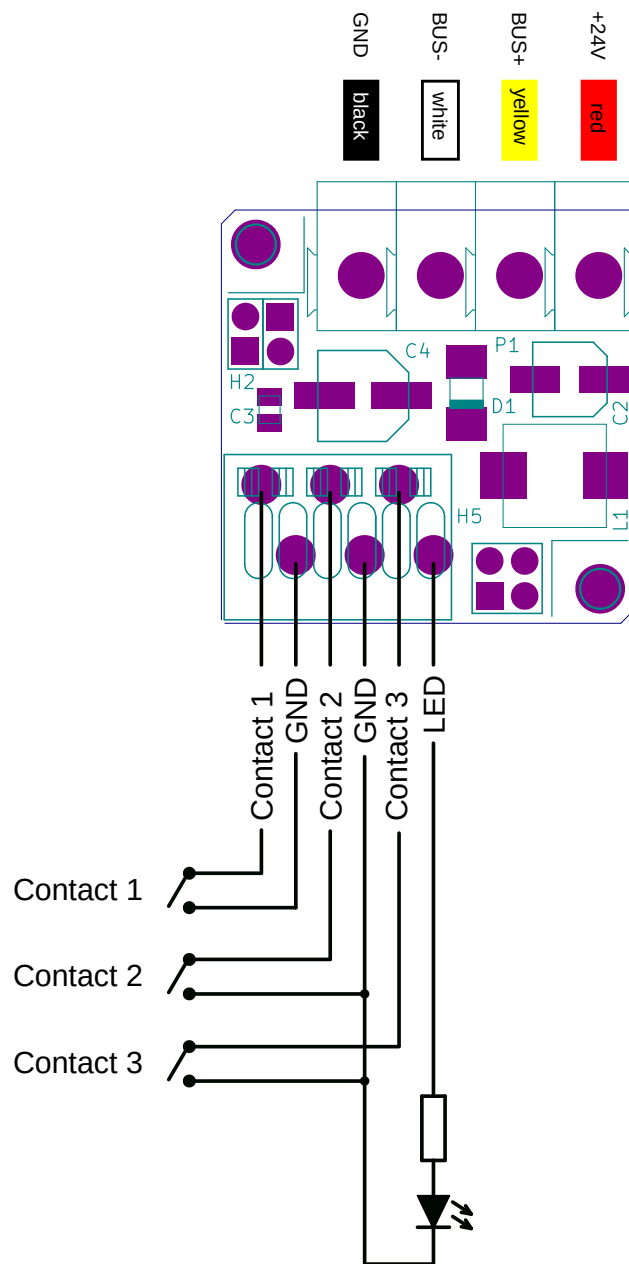


Bottom shelf PCB

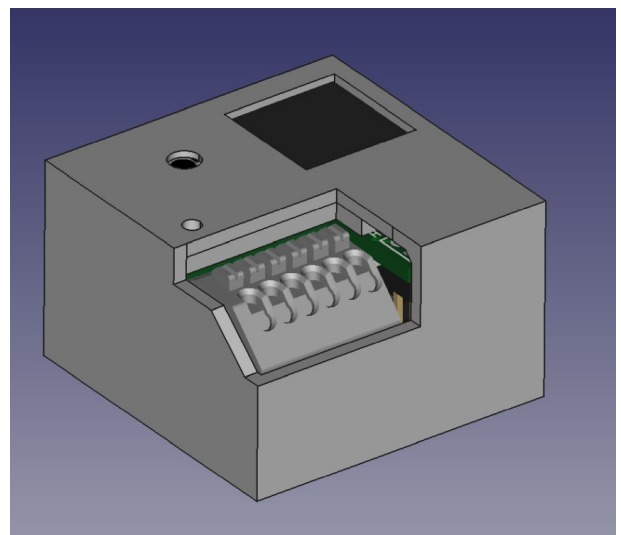
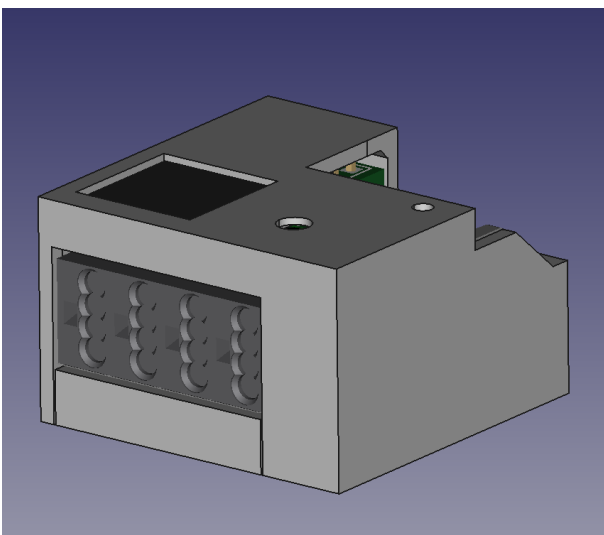
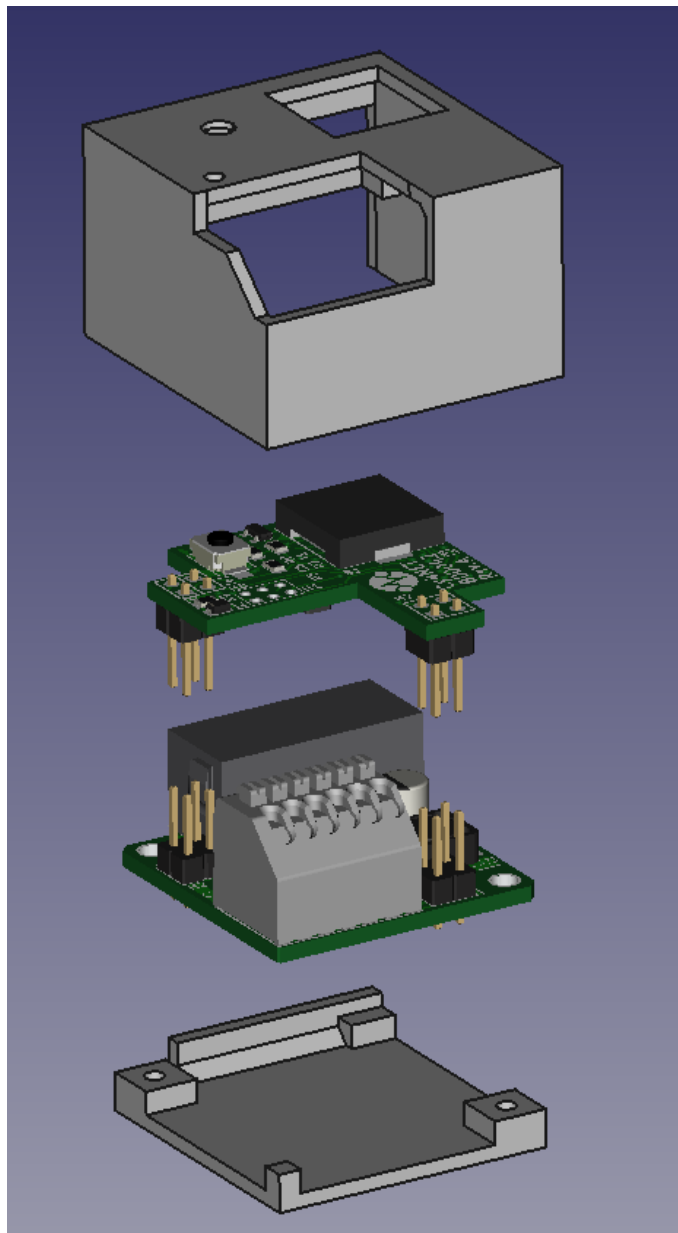


Combined PCB

## Pinout



## Device housing





## Photos

